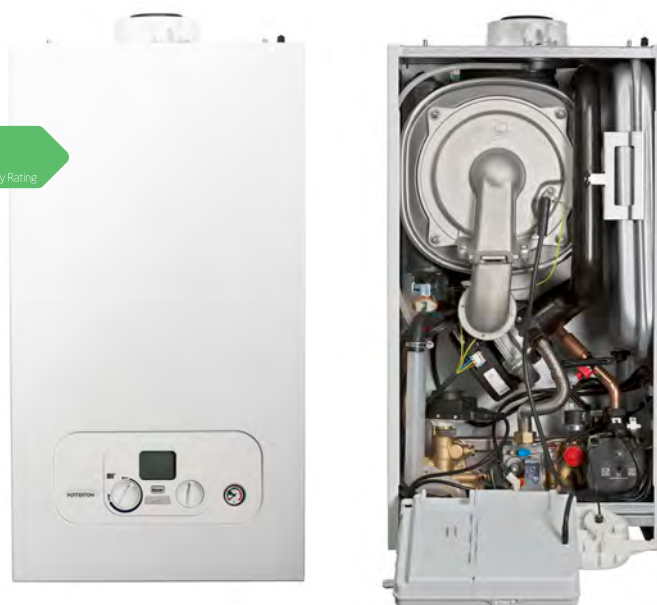


Assure System 12kW-24kW

High Efficiency Wall Hung Condensing Gas Boiler

The Potterton Assure System is a fully modulating and highly efficient boiler that uses the right amount of fuel to save money on fuel bills.



Features

Outputs: 12kW, 15kW, 18kW, 24kW

Built in stand off frame within boiler casing

Compact cupboard fit

Lightweight

Designed for servicing and maintenance

Fully modulating and highly efficient

Compatible with Megafluo Eco SystemReady

Central flue

Flueing options of up to 20m

Optional outdoor weather sensor available

Ease of service

Vertical packaging

Clean aesthetic finish

Built in drip tray

LPG appliances available

2 Year Warranty*

LPG appliances available

*Subject to terms and conditions. See www.potterton.co.uk

Benefits

To suit most property sizes

Ease of installation, easy to site and pipework neatly concealed within footprint of boiler. Complete with pipe spacing bracket

Can be installed discreetly

28kg lift weight

Maximum access to all components

Boiler intelligently uses the right amount of fuel to meet the set central heating temperatures, saving money on fuel bills

Great fuel savings for hot water - all available from one manufacturer

For ease of siting and existing boiler replacement

Allowing greater flexibility of siting

Enhances system control and customer comfort

No special tools or replacement seals required for standard service

Allows for ease of access to all installation accessories from top of the packaging

Boiler casing hides system connections for cleaner finish

Protection against water ingress in extreme weather conditions

Suitable for rural projects not on gas mains

For peace of mind

Suitable for rural projects not on gas mains

Specification

	Units	12	15	18	24	18 LPG	24 LPG
Sales code (boiler only)		7716067	7658127	7658128	7716068	7703810	7722427

Controls

Reset switch		Yes	Yes	Yes	Yes	Yes	Yes
User adjustable CH temperature		Yes	Yes	Yes	Yes	Yes	Yes
LCD temp/status/fault diagnosis display		Yes	Yes	Yes	Yes	Yes	Yes

Gas

Natural Gas		Yes	Yes	Yes	Yes	-	-
LPG		-	-	-	-	Yes	Yes
Nominal inlet supply pressure	mbar	20	20	20	20	37	37
Maximum gas rate	m ³ /hr	1.31	1.64	1.96	2.61		
Maximum gas rate	kg/hr					3.72	4.95
Heat input central heating (CH)	kW max gross (QnHs)	13.7	17.2	20.6	27.4	20.6	27.4
	kW min gross (QnHs)	5.2	5.2	5.2	5.2	5.2	5.2
Heat output CH non-condensing	kW max (Pn)	12.0	15.0	18.0	24.0	18.0	24.0
	kW min (Pn)	4.5	4.5	4.5	4.5	4.5	4.5
Heat output CH condensing	kW max (Pnc)	12.9	16.2	19.4	25.8	19.4	25.8
	kW min (Pnc)	4.9	4.9	4.9	4.9	4.9	4.9

ErP product information

NOx	mg/kWh	24.0	29.0	30.0	28.0	30.0	28.0
NOx class		6	6	6	6	6	6
Space heating efficiency class		A	A	A	A	A	A
Seasonal space heating energy efficiency	%	93	93	93	93	93	93
Sound power level, indoors	L _{WA} dB	44	46	48	51	48	51

Electrical

Electrical supply	Volts/Hz	230/50	230/50	230/50	230/50	230/50	230/50
Permanent live required		Yes	Yes	Yes	Yes	Yes	Yes
Switched live		Yes	Yes	Yes	Yes	Yes	Yes
Power consumption	Watts	60	65	70	100	70	100
External fuse rating	Amps	3	3	3	3	3	3
Internal fuse rating		F2HA250V	F2HA250V	F2HA250V	F2HA250V	F2HA250V	F2HA250V
Ingress protection rating		IPX5D	IPX5D	IPX5D	IPX5D	IPX5D	IPX5D
Integral 'boiler only' frost thermostat		Yes	Yes	Yes	Yes	Yes	Yes

Outputs

**12, 15, 18
and 24kW**

Installer lift weight

From
28kg

Compact cupboard fit

Can be installed
in a **290mm**
deep cupboard

Units 12 15 18 24 18 LPG 24 LPG

Mechanical

Pre-plumbing installation jig		Optional	Optional	Optional	Optional	Optional	Optional
Isolating valves		Yes	Yes	Yes	Yes	Yes	Yes
Gas supply connection	mm	22	22	22	22	22	22
Central heating connections	mm	22	22	22	22	22	22
Condensate drain connection	mm	21.5	21.5	21.5	21.5	21.5	21.5
Safety discharge connection	mm	15	15	15	15	15	15

Hydraulic

Safety discharge pressure	bar	3	3	3	3	3	3
Integral automatic boiler bypass		Yes	Yes	Yes	Yes	Yes	Yes
Integral expansion vessel capacity	litres	7	7	7	7	7	7
Maximum capacity of Central heating system	litres	100	100	100	100	100	100
24hr pump exercise		Yes	Yes	Yes	Yes	Yes	Yes
Compartment ventilation requirement		No	No	No	No	No	No
CH system inhibitor required		Yes	Yes	Yes	Yes	Yes	Yes
Pump overrun		Yes	Yes	Yes	Yes	Yes	Yes

Concentric flue systems

Concentric flue diameters	mm	60/100 and 80/125					
Standard horizontal flue kit length (60/100)	mm	685	685	685	685	685	685
Standard horizontal telescopic flue length (60/100)	mm	315-500	315-500	315-500	315-500	315-500	315-500
Max equiv length horizontal/vertical (60/100mm)	m	10	10	10	10	10	10
Max equiv length horizontal/vertical (80/125mm)	m	20	20	20	20	20	20
Equivalent length per 135° bend	m	0.5	0.5	0.5	0.5	0.5	0.5
Equivalent length per 93° bend	m	1.0	1.0	1.0	1.0	1.0	1.0

Weights

Maximum installation lift weight	kg	28.1	28.1	28.1	28.1	28.1	28.1
Gross packaged boiler weight	kg	30.6	30.6	30.6	30.6	30.6	30.6

Experts in
public sector
housing and
newbuild

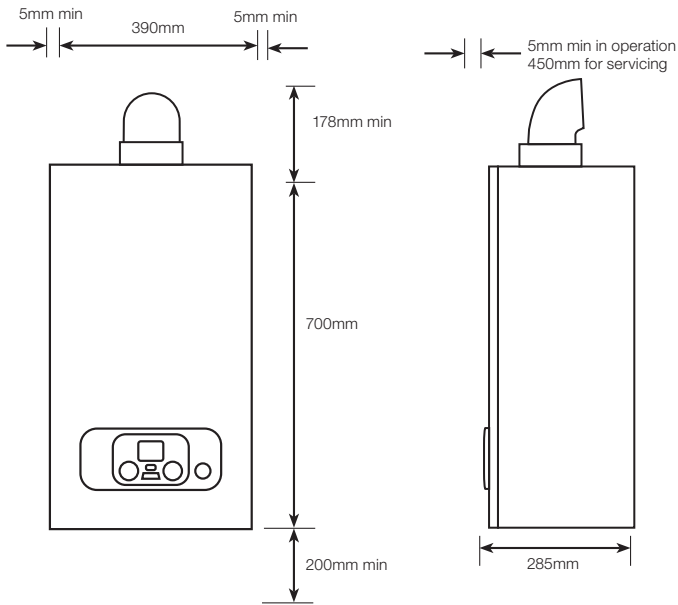
Manufactured
in the UK
for 150 years

Our boilers
use tried
and tested
technology



Dimensions

Assure System 12kW - 24kW



Brooks House
 Coventry Road
 Warwick
 CV34 4LL

part of **BAXI**



Baxi policy is one of continual improvement and development. The right to change specification and appearance without prior notice is reserved. The reproduction of colours is as accurate as photographic and printing processes allow. The consumer's statutory rights are not affected. e&o

ASSURESYSYSTEM_ISSUE1_01/19

sales 0344 871 1560
 email info@potterton.co.uk
 web potterton.co.uk